



SOUTH MOUNTAIN

See Reverse Side
for Floor Plans

- 1 story on an unfinished basement with 3 bedrooms/2 bathrooms
- 2,016 heated square feet, 3,064 unheated square feet
- An optional finished basement adds 2 bedrooms, bath, family room, and 1,480 heated square feet
- Covered porches & open decks
- 6x8 D logs on main level with a Limited Lifetime Warranty
- Log siding or board and batten on gable end walls
- Vaulted ceilings
- Premium high performance, Low-E windows and doors
- Conventional framed or pre-engineered I-joint roof framing system
- 30-year architectural shingles or 25 year ribbed metal roofing
- Premium door and window hardware

©2015 Walker Top Log Homes

updated 5/6/15



In Partnership With ...



675 S Old Piedmont Highway
Greenville, SC 29611

office 864-220-2884 • fax 864-220-2818
email Info@WalkerTop.com • www.WalkerTop.com

SOUTH MOUNTAIN

Square Foot Totals

Main Floor = 2,016 ft²

Optional Basement = 1,480 ft²

Total Heated ft² = 3,496 ft²

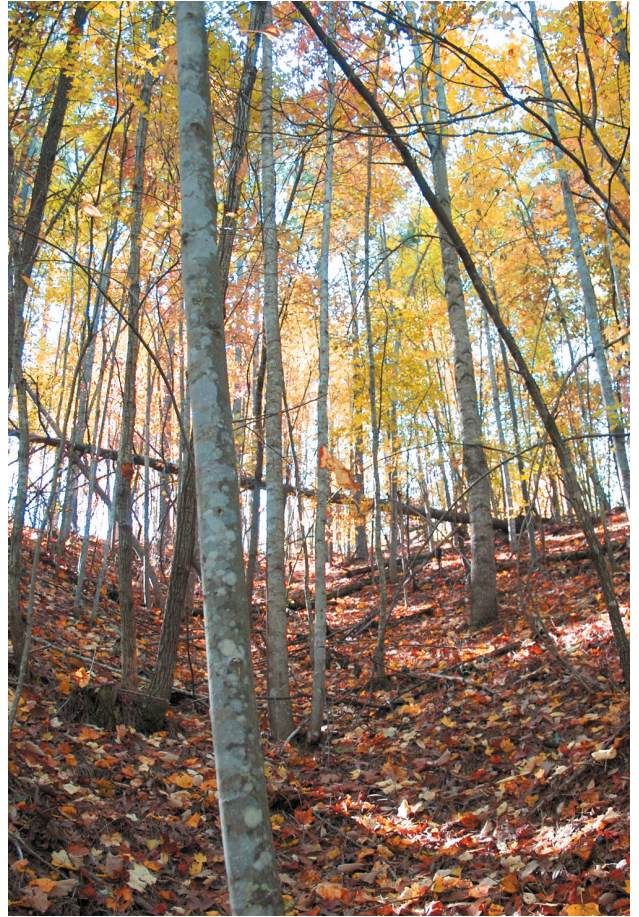
Unfinished Basement = 536 ft²

Deck = 480 ft²

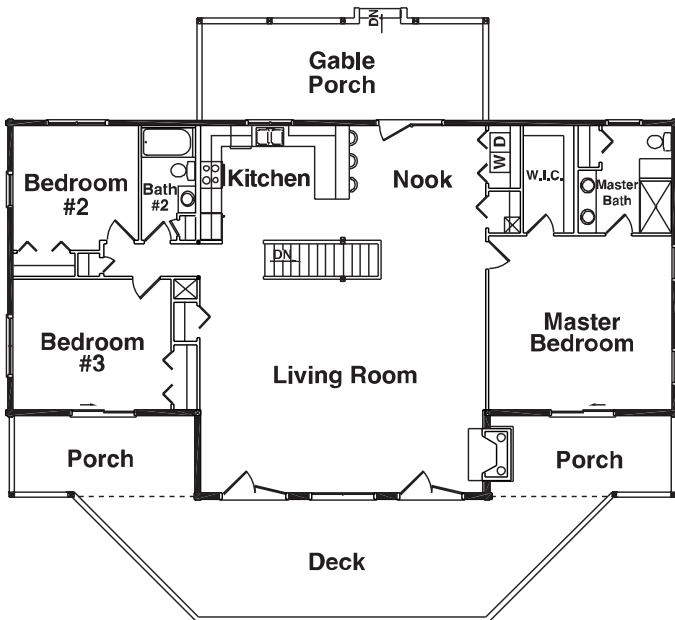
Porch = 288 ft²

Gable Porch = 280 ft²

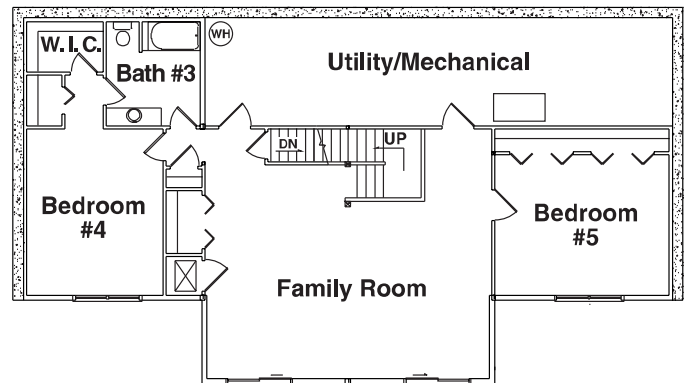
Total Unheated ft² = 1,594 ft²



1st Floor Plan



Optional Basement Floor Plan



©2015 Walker Top Log Homes

Artistic rendering of model house and floor plans, subject to change without notice or obligation.

updated 5/6/15



In Partnership With ...



675 S Old Piedmont Highway
Greenville, SC 29611

office 864-220-2884 • fax 864-220-2818
email Info@WalkerTop.com • www.WalkerTop.com